

The Early Years team works collaboratively, offering support to all Early Years settings with specific training, funding applications, advice on the Early Years curriculum and Ofsted guidance.



Satwinder Saraon

Head of Service and Early Years Specialist Services

I'm the Head of Service for Early Years and SEN support. I work across Early Years settings and schools supporting sufficiency, quality, strategy and to promote inclusive practices.

Philippa Marshall

Early Years Team Lead

I work with the Early Years team to support the advisors and funding officers, offering advice on Early Years funding, EYFS, transitions and implementation of government guidance. I oversee the team's work programme and the operations of the Early Years Service.



Renee Daley

Early Years Funding Officers

The Early Years Funding team continue to provide support for **ALL** childcare funding entitlements and offers. We also provide bespoke training for all EY settings with setting up Synergy accounts, updating on portal timetables and code validation.

Felista Aloo



Andrea Lawler-Ford

Early Years Advisors

We support the successful implementation of the EYFS and work with settings to develop quality improvement plans. We provide support to leaders, managers and practitioners in Early Years provision provided by the private, voluntary and independent sector and to childminders.

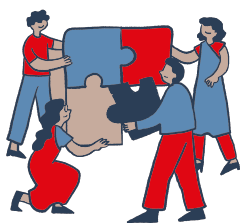
Stacy Miller



Katie Hodges

Strategic Transformation Lead

I work with schools and providers to support transformation and change programmes, such as the roll-out of school breakfast clubs and afterschool childcare. Leading on Childcare Sufficiency, I also support settings to expand to meet demand from the new childcare entitlements.



Useful Links:

[Early Years Foundation Stage Statutory Framework \(Feb 2024\)](#)
[Development Matters – Non-Statutory Curriculum Guidance](#)

[SEND Local Offer](#)

[INSPIRE Website](#)

[Childcare Choices](#)

Team emails:

eyfsservice@lbhf.gov.uk

SENIF@lbhf.gov.uk