

Early Years Team

The Early years team works collaboratively as a multiagency, offering support to all Early year's settings with specific training, funding applications, advice on the EYs curriculum and Ofsted guidance.

Head of Service and
Early Years Specialist Services



Satwinder
Saraon

Head of service for Early years and SEN support. I work across early years settings and schools supporting sufficiency, quality, strategy and to promote inclusive practices.

Early Years Team
Lead



Philippa
Marshall

I work with the Early years team to support the Early years advisors and EY years funding officers, who offer advice on EYs education/transition/ accessing funding/ government guidance on EY Framework /training /Ofsted guidance and the new extended entitlements .

Early Years Funding Officers



Felista
Aloo



Danila
Pykhanov

We are dedicated to ensuring the success of Early years education programs, particularly for vulnerable 2-year-olds, and increasing the effectiveness of funding for 3 and 4-year-olds. Our role involves close collaboration with the Children's Services, Finance and SEND team, to ensure compliance with national and local expectations for Early years entitlements. We also focus on clear communication with providers to ensure smooth program delivery and maximum benefit for families.

Early Years Advisors



Andrea
Lawler-Ford



Janina
Perera

We are the Early years advisors in LBHF. We support the successful implementation of the EYFS and work with settings to develop quality improvement plans. We provide support to leaders, managers and practitioners in Early years provision provided by the private, voluntary and independent sector and to childminders. We support Early years leadership teams to reflect on practice and ensure that the essential characteristics of high-quality provision are in place.

Inclusion Team Educational
Psychologists



Dr Kamaria
Fleary



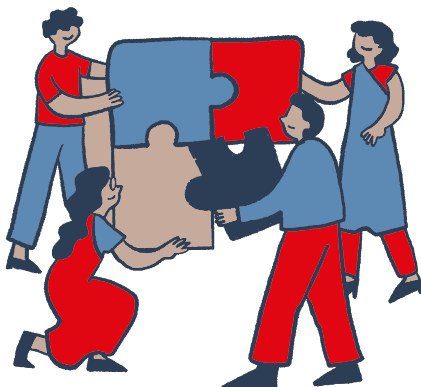
Dr Gillian
O'Shea

Early Years Inclusion Advisor



Izzy
English

We work as part of the multidisciplinary team of professionals aiming to support PVI's in developing inclusive practice in their settings. We offer a **FREE** extensive training, network support and consultation service. We are also supported by the wider Early years team.



Useful Links:

[Early Years Foundation Stage Statutory Framework \(Feb 2024\)](#)
[Development Matters - Non-Statutory Curriculum Guidance](#)
[SEND Local Offer](#)
[INSPIRE Website](#)
[Childcare Choices](#)

Team email:
eyfservice@lbhf.gov.uk