



Childcare Works – Launch webinar

Delivery support contract – Early Years
Expansion and Wraparound Childcare
Programmes

Our aims today



- DfE Introduction to Childcare Works
- Meet the Childcare Works team
- Overview of the programme

DfE Aim and Purpose of the Support Contract

**Jack Thomlinson – Senior Responsible Officer, Contract Lead,
Childcare Reform Delivery**



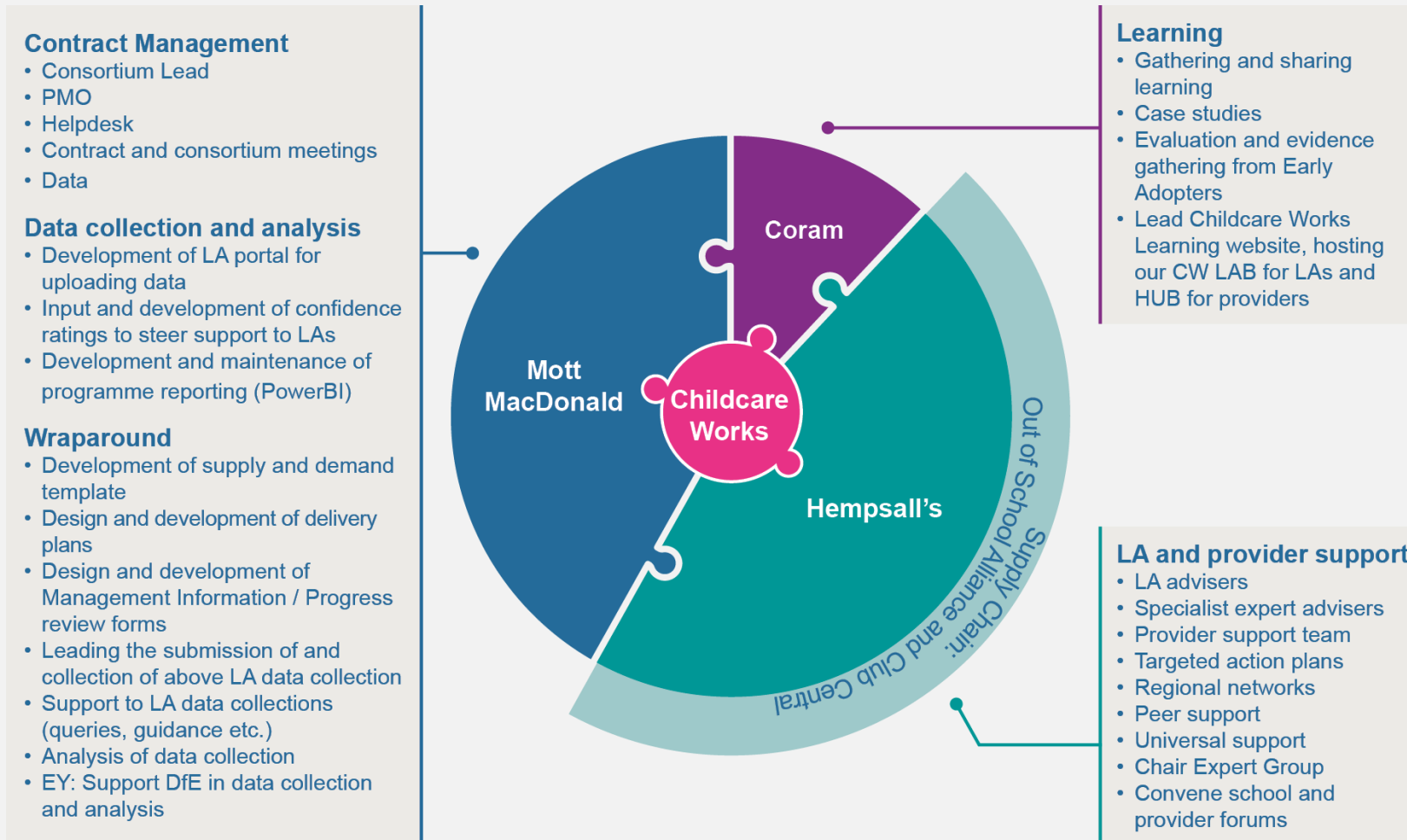
DfE Aim and Purpose of the Support Contract

**Emily Whitehead and Hannah Streatfeild (jobshare) –
Wraparound policy lead, Breakfast, Holiday and Wraparound Provision**



Childcare Works – Who are we and what are our ambitions?

We are a Consortium of Mott MacDonald, Coram Hempshall's and Coram



Coram Hempson's

Local Authority and Provider support, specialist adviser expertise

•LA support – individualised

- Named adviser and 1:1 support
- Specialist expert advisers
- Targeted support, prioritisation and action plans
- Early adopters

•Provider support

- Tools and documentation
- Train the trainer programme
- Provider engagement

LA support - universal

- Regional and National events
- Resources
- Thematic support dependent on need

Facilitating peer support and networking

Stakeholder Groups

Coram Hemsall's – the team

Local Authority and Provider support, specialist adviser expertise



Steph Douglas



Tanya Petherick



Rebekah Jackson



Barbara Wilson



James Hemsall



Jo Pringle



Kate Haythornthwaite

Mott MacDonald

Responsible for Contract Management, Data Collection and Analysis, helpdesk and K-Hub

Early Years and Wraparound Childcare

Project Team



Julie Huggins
Programme Director



Amy Idle
Project Principal



Will Shilton
Project Manager



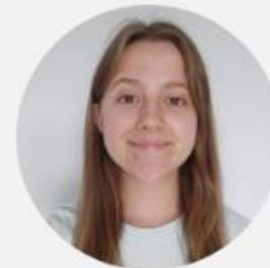
Chris Burgess
Assistant Project
Manager/PMO Lead



Rachel Kelly
Data Analyst



Alison Role
PMO (Project
Management)



Hannah Gale
PMO (Data)



Becki Dixon
PMO (Comms &
Engagement)

Mott MacDonald

Lead contractor for the consortium

Programme Management

- Tracking engagement activity at events
- Milestones, deliverables and KPI tracking
- Communications with LAs
- Facilitating discussions K-Hub

LA support

- Coordination of events and webinars
- PMO and helpdesk – answering queries and supporting LAs, triaging support to our adviser team in Coram Hemsall's

Mott MacDonald

Data Collection and Analysis

- Setting up a 'portal' for LAs to submit data.
- Providing support to LAs with data returns (supply and demand, delivery plans and MI).
- Analysis of data to inform delivery and support.

Coram

Learning Partner

Learning Hub

A subsite to host resources and information – **Lab** for LAs and **Hub** for providers

Learning and evidence

- Using data, adviser insight and engagement to create case studies and best practice tools, materials and resources for LAs and providers
- These will be in easily accessible and varied formats, for example podcast, blogs, business templates, videos, infographics
- Via draw down budget

Early adopters

Collation of evidence and learning from early adopters

Expert Board

Convening the CW Expert and Stakeholder board – test and challenge assumptions, support with decisions

Learning Partner activity

- We will work to create a range of relevant resources to support local authorities and providers in the roll out of the early education entitlements and wraparound childcare programme.
- The resources created will be appropriate, timely and responsive.
- Resources will include:
 - Vodcasts
 - How to guide
 - Podcasts
 - Why do guide
 - Blogs
 - Top Tips
 - Lit review “lite”
 - Business Case Templates
 - Infographics
 - Action Learning Sets
 - Case studies
 - Lessons learnt

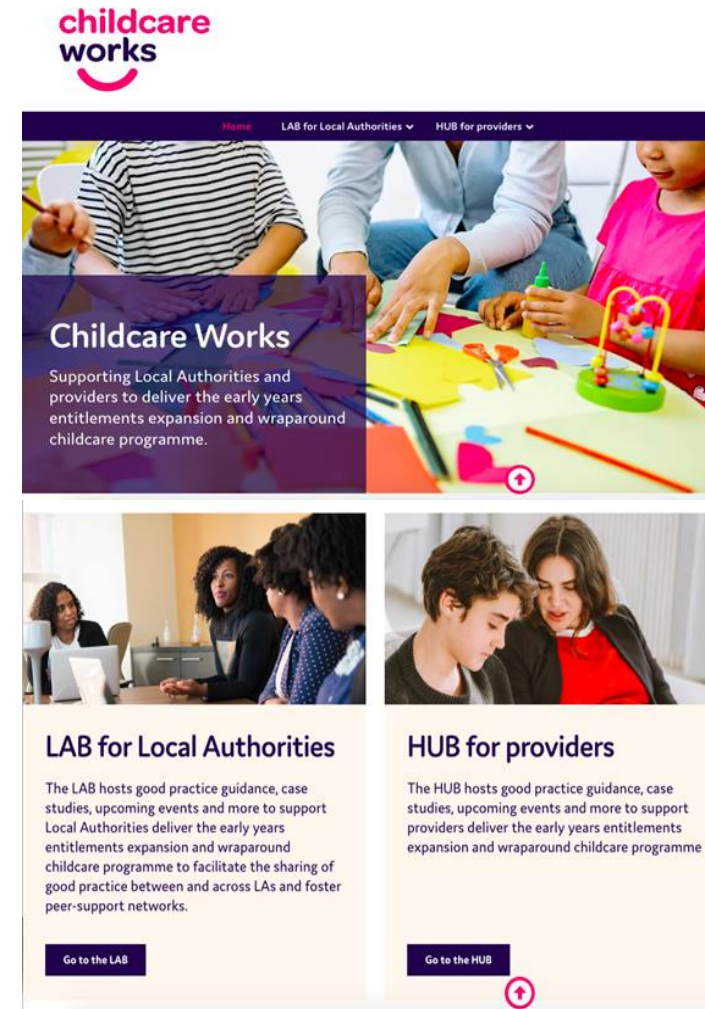


The Childcare Works Learning Microsite

- The Childcare works learning website will host a LAB for local authorities and a HUB for providers.
- It will connect LA staff implementing the early years and wraparound childcare policies to a wide range of high-quality knowledge and learning resources.
- The LAB and the HUB will provide:
 - Comprehensive access
 - Single search
 - Free access
 - Quality assurance
 - Expert support

The HUB is available for providers, but LA staff can also access. Like the LAB, the HUB will provide free access to tools, materials and resources that could be useful for LAs to share with their providers.

If you need assistance or have questions related to the LAB, reach out delivery support partner Childcare Works who can provide guidance and support. ADD LINK to Helpdesk



Coram team



Lydia Hodges
Head of
Coram Family and Childcare



Ellen Broome
Managing Director
Coram BAAF



Max Stanford
Head of Impact and Evaluation
Coram



Ellie Grace
Programmes Manager
Coram Family and Childcare

How we work

1

We will listen

2

In collaboration
with you and
DfE

3

Provide timely
advice and
support

4

Review to help
measure
planning and
delivery

5

Look to
reduce the
burden

6

Reflect
on successes



Overview of support



- Contract and Programme Management
- Helpdesk and queries
- Event coordination
- Early Years self-evaluation forms (SEF) returns analysis with DfE
- Set up and maintenance of LA portal
- Development and submission of WAC LA data: Supply and demand, delivery plans and MI (progress review forms)
- Analysis of themes from survey returns

LA support:

- Allocated LA advisers monthly contact to discuss issues, update on progress identify further support needed
- Universal offer of thematic resources through expert advisers and specialists
- Peer support to build capacity and learning across all LAs

Provider support:

- Training programme and tools development
- Training for trainer programme (delivered online and face-to-face) across EY, WAC and schools.
- Universal offer of thematic support will cover areas such as SEND, sufficiency planning and IT and systems

- Universal support will dovetail with our learning approach, delivering a blend of face-to-face national events and regional network meetings
- Sharing of good practice through Childcare Works Learning website – the CW LAB for LAs and HUB for providers – which will hold tools, materials and resources
- Evidence collation from early implementers
- Expert Group meetings

Getting in contact



- **Childcare works contact details – please use this moving forwards:**
childcareworks@mottmac.com. Please contact us for support, including where you need to request one-to-one support or advice about how to implement DfE policy. These requests will be coordinated by the Childcare Works PMO team, who will forward onto the relevant Coram Hemsall’s advisers. We will also inform DfE of this request (and please note that DfE regional leads may also refer LAs to Childcare Works for support).
- **Questions on policy design and funding, or any clarifications that the you (LA) believes should come directly from DfE, should be sent to the relevant DfE mailbox or your regional lead within DfE.** For Early Years questions, these should be directed to:
 - earlyyears.entitlements@education.gov.uk mailbox; for the wraparound programme, they should be directed to wraparound.programme@education.gov.uk or wraparound.finance@education.gov.uk. Please continue to engage with your DfE regional leads as you do now.
- **K-Hub: The DfE EY Team K-Hub site has changed to include Wraparound Childcare from tomorrow. For those who regularly access the K-Hub forum, the link will stay the same [Home - DfE EY Team - Knowledge Hub \(khub.net\)](http://khub.net) but it will now be titled **Early Years Expansion and Wraparound Programmes**.**

Future Events

National Meetings in March to focus on September 2024

Join us at one of two national in-person meetings in London or Manchester in March 2024. The meetings will focus, for the first time, upon the planning and implementation of both the expanded early years entitlements and wraparound childcare.

- DfE and national speakers and current and future policy direction
- Collaborative coproduction workshops on key themes with subject specialists
- Peer support network building
- Outlining in detail the Childcare Works support and challenge programme 2024-2026
- Linking you to resources now and what is coming up to help

200 FREE places per event on a first come, first served basis.

15 March 2024 TUC Congress Centre, London [book here](#)

18 March 2024 The Midland Hotel, Manchester [book here](#)

Or contact [our helpdesk](#).

Calendar of future events to be shared soon

Regular contact with our adviser team to commence from March.

Face to face regional meetings anticipated for May 2024.

Question and answer session

Sign up to upcoming National Events:

- *15 March 2024 TUC Congress Centre, London [book here](#)*
- *18 March 2024 The Midland Hotel, Manchester [book here](#)*

Please complete the survey we post in the chat to let us know your feedback!

Contact our helpdesk: Childcareworks@mottmac.com



coram | hemsall's
delivering change together

coram | better chances
for children
since 1739



- **Summary and close**
- **Please complete [this survey](#) to let us know any questions you have regarding our role or areas of support you would find useful**

Childcareworks@mottmac.com