

**The Early Years team works collaboratively as a multiagency, offering support to all Early Year's settings with specific training, funding applications, advice on the EYs curriculum and Ofsted guidance.**

Head of Service and  
Early Years Specialist Services



Satwinder Saraon

Head of service for Early years and SEN support. I work across early years settings and schools supporting sufficiency, quality, strategy and to promote inclusive practices.

Early Years Team Lead



Philippa Marshall

I work with the Early years team to support the Early years advisors and EY years funding officers, who offer advice on EYs education/transition/ accessing funding/ government guidance on EY Framework /training /Ofsted guidance and the new extended entitlements .



Renee Daley



Danila Pykhanov

Early Years Funding Officers

The Early Years Funding team continue to provide support for **ALL** childcare funding offers including the new extended entitlements for the under 2 year olds. They also provide bespoke training for all EY settings with setting up synergy accounts, updating on portal timetables and code validation.



Andrea  
Lawler-Ford



Stacy Miller



Janina Perera

Early Years Advisors

We are the Early years advisors in LBHF. We support the successful implementation of the EYFS and work with settings to develop quality improvement plans. We provide support to leaders, managers and practitioners in Early years provision provided by the private, voluntary and independent sector and to childminders.

Educational  
Psychologist



Dr Gillian O'Shea

Speech and Language  
Therapist



Olfat Moussa

Early Years Inclusion Team

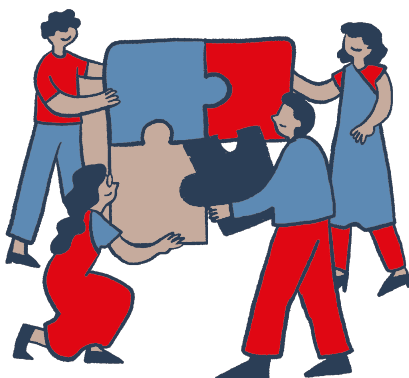
We work as part of the multidisciplinary team of professionals aiming to support PVI's in developing inclusive practice in their settings. We support EY practitioners and staff feel confident with working with children with SEND in their care. We offer a **FREE** extensive training, network support and consultation service.



Katie Hodges

Early Years Transformation Lead

I am the Transformation Lead for Early Years and Wraparound Childcare in the borough. My main role is to work with schools and providers to create affordable, inclusive and sustainable breakfast clubs and after-school clubs. Leading on Childcare Sufficiency, I also support settings to expand to meet demand from the new childcare entitlements.



Useful Links:

[Early Years Foundation Stage Statutory Framework \(Feb 2024\)](#)

[Development Matters - Non-Statutory Curriculum Guidance](#)

[SEND Local Offer](#)

[INSPIRE Website](#)

[Childcare Choices](#)

Team emails:

[eyfservice@lbhf.gov.uk](mailto:eyfservice@lbhf.gov.uk)

[SENIF@lbhf.gov.uk](mailto:SENIF@lbhf.gov.uk)